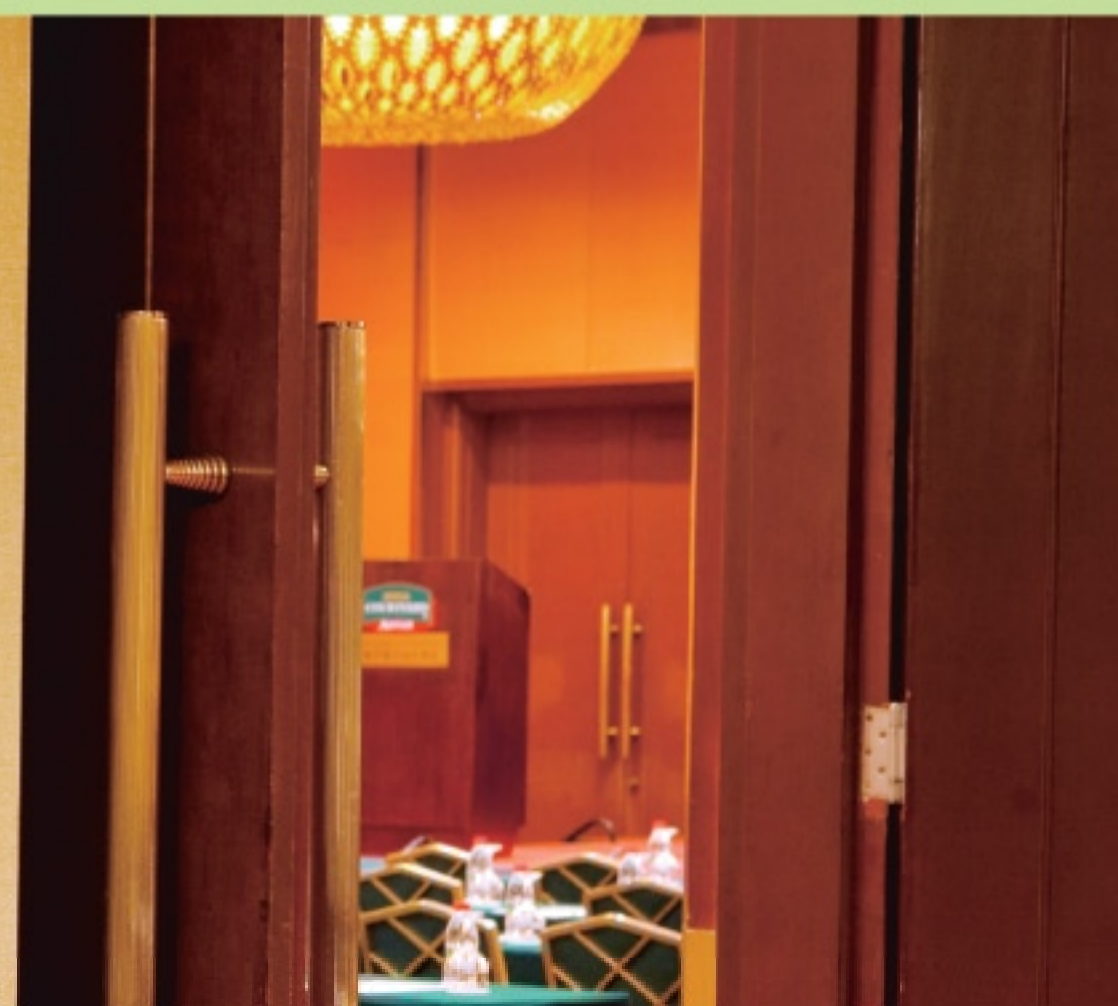


BREAK AWAY
FROM BUSINESS AS USUAL



宴会厅
BALLROOM



**Courtyard by Marriott®
Shanghai Pudong**

838 Dongfang Road, Pudong
Shanghai, P. R. China 200122
T 86.21.6886 7886
F 86.21.6886 7889
Reservations 400.888.5551
courtyardshanghai.com

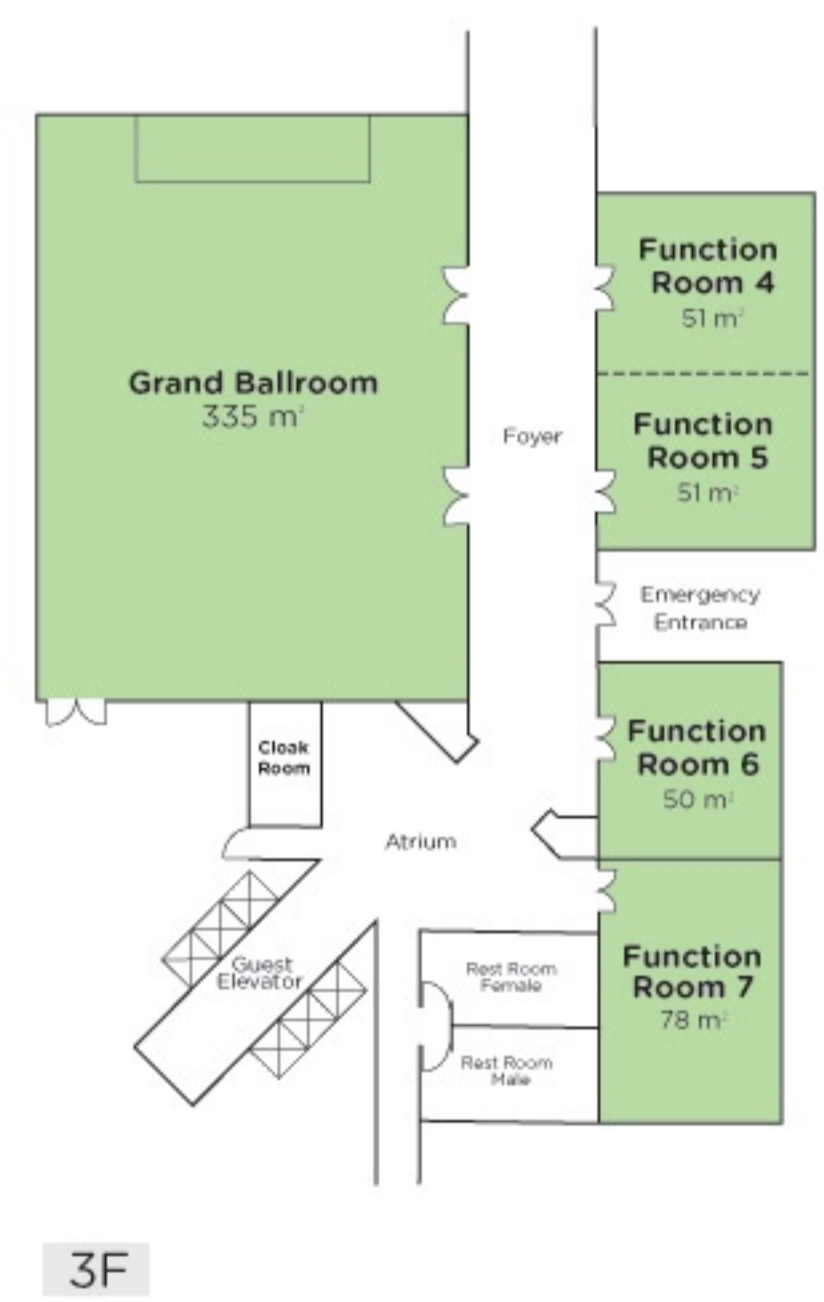
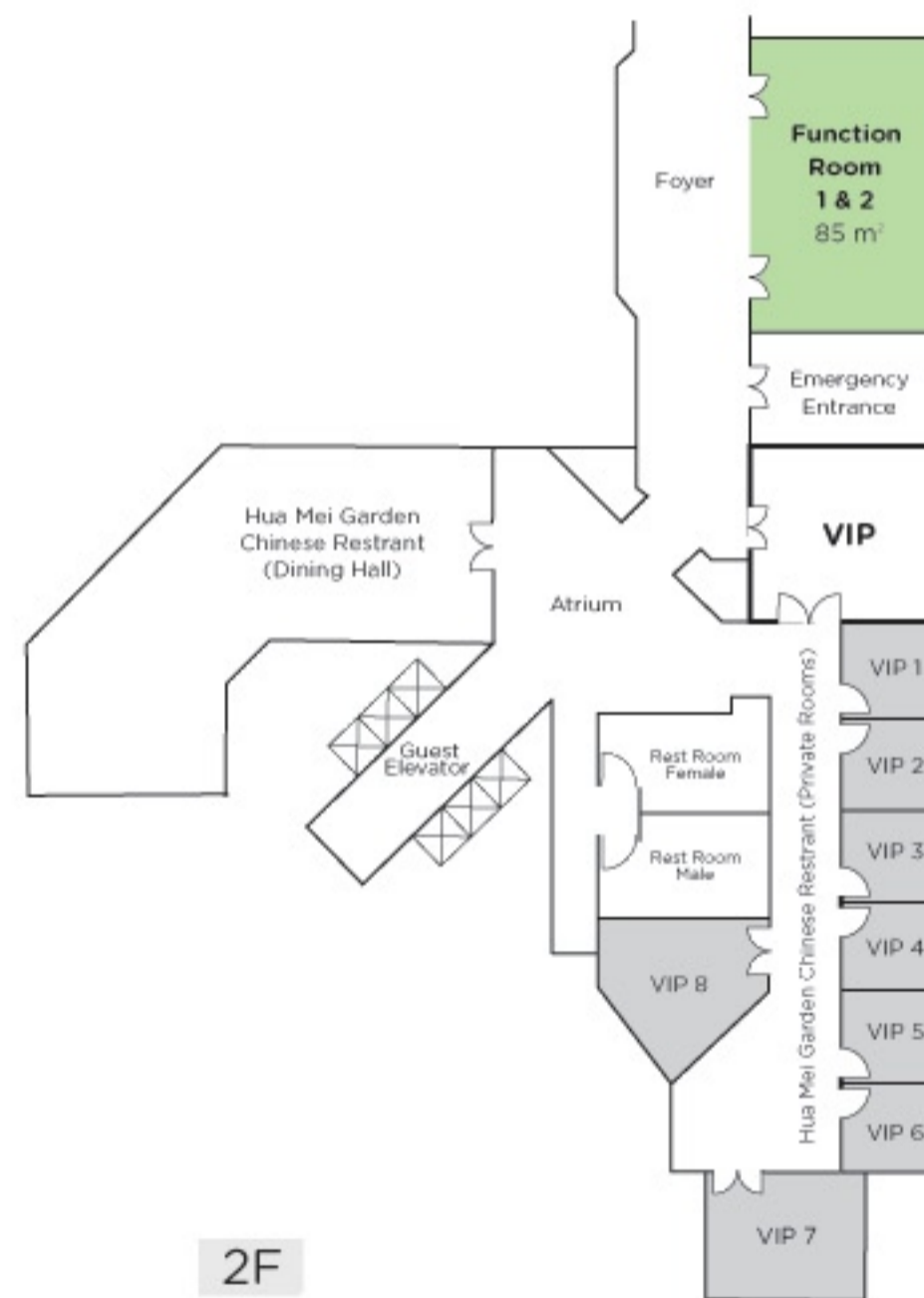
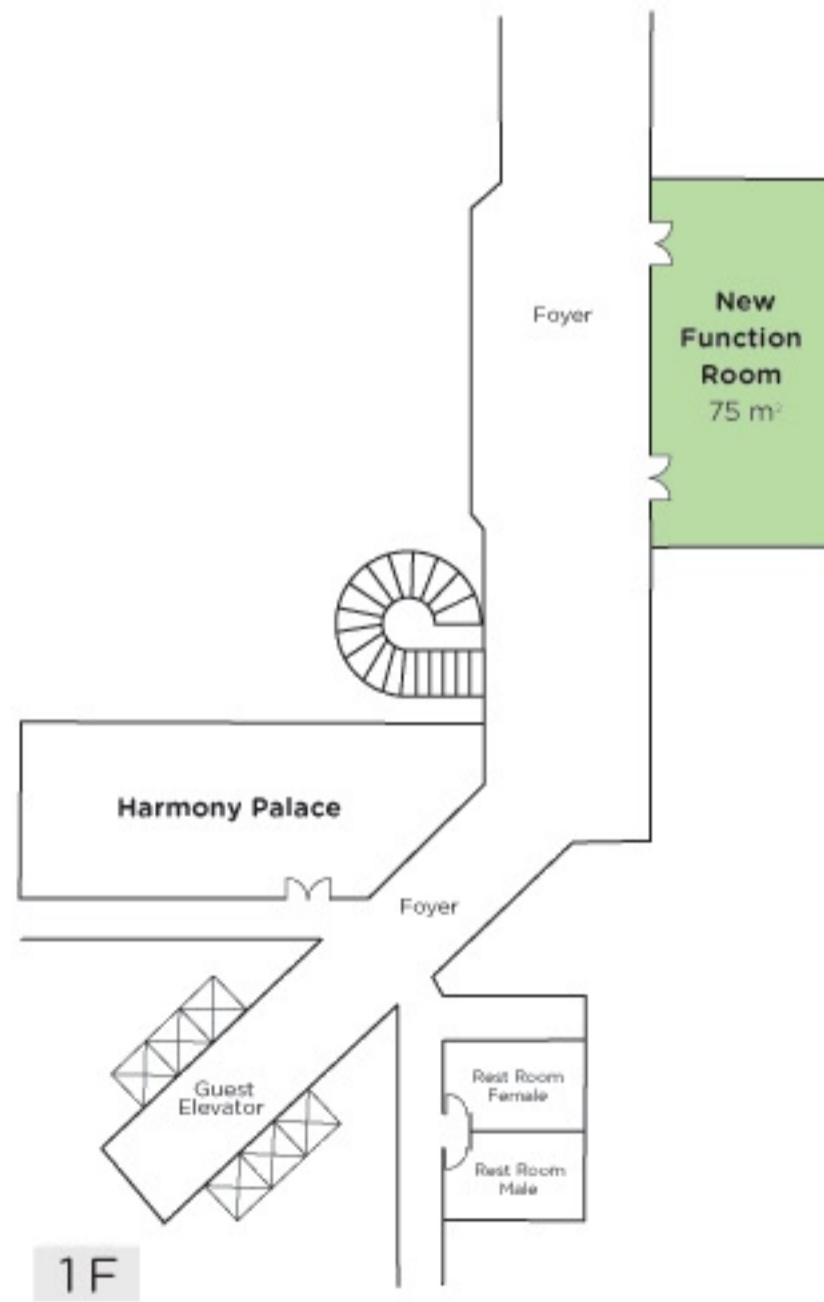
Location

Conveniently located in the heart of the Lujiazui Trade and Financial Area - easy access to major banks, international convention centers, Zhang Jiang High-tech Park, Jin Qiao Export Processing Zone and Wai Gao Qiao Free Trade Zone.

Restaurants & Lounge

Spices Café, Hua Mei Garden Chinese Restaurant, Lobby Lounge, Gourmet Counter.

Meeting Area Floor Plan



| Meeting Room | Dimensions (W x L x H) | Square Meter | Theater | Classroom | Conference | U-Shape | Reception | Banquet |
|--------------------|------------------------|--------------|---------|-----------|------------|---------|-----------|---------|
| Courtyard Ballroom | 14.7x22.8x4.5 | 335 | 350 | 220 | 70 | 120 | 300 | 220 |
| New Function Room | 6x12.3x3.1 | 75 | 60 | 30 | 20 | 27 | 30 | 40 |
| Function Room 1&2 | 6.8x12.4x3 | 85 | 70 | 36 | 20 | 27 | 40 | 40 |
| Function Room 4 | 8.5x6x3.1 | 51 | 40 | 27 | 12 | 14 | 30 | 25 |
| Function Room 5 | 8.5x6x3.1 | 51 | 40 | 27 | 12 | 14 | 30 | 25 |
| Function Room 6 | 6.5x7.6x3.1 | 50 | 40 | 24 | 10 | 14 | 20 | 14 |
| Function Room 7 | 6.9x11.4x3.1 | 78 | 70 | 36 | 12 | 21 | 30 | 30 |

Guest Room Amenities

Large working desk, In-room safe, Telephones, Data ports, High speed internet access, Satellite channels, Voicemail, Hairdryer, Minibar, Iron and Ironing board, Tea and coffee making facilities, Smoking and non-smoking rooms, Disabled rooms.

Facilities & Services

Personalized "At Your Service", 24 hours Room Service, Business Center service, Concierge service, Limousine service, Laundry services, Secure Parking, Fitness Center.

Attractions

The Bund, Oriental Pearl Tower, Shanghai World Financial Center, Shanghai Ocean Aquarium, People's Square, Yu Garden, Shanghai New International Expo Center, Shanghai International Convention Center, Pudong Exhibition Center.

IT'S A NEW STAY.™

体验与众不同。



上海齐鲁万怡大酒店

中国上海浦东东方路838号 200122
电话 86.21.6886 7886
传真 86.21.6886 7889
免费预订电话 400.888.5551
cn.courtyardshanghai.com

酒店位置

上海齐鲁万怡大酒店地理位置优越，座落于陆家嘴金融贸易中心区域，与多家银行总部、国际会议展览中心仅咫尺之遥，且通往张江高科技园区、金桥进出口加工区和外高桥保税区的交通十分便利。

餐厅和酒廊

辣椒屋西餐厅、华美轩中餐厅、大堂酒廊。

会议区域平面图



客房设施

宽敞的工作桌、室内保险箱、电话、数据端口、宽带网络、卫星电视、语音信箱、吹风机、小冰箱、电熨斗及熨衣板、咖啡/茶器皿、吸烟及非吸烟客房、残障人士客房。

设施及服务

个性化"为您服务"专线、24小时客房送餐服务、商务中心服务、礼宾部、轿车租赁服务、洗衣服务、地下停车场、健身中心。

观光游览及商务旅行

外滩、东方明珠、环球金融中心、上海海洋水族馆、人民广场、豫园、上海新国际博览中心、上海国际会议中心、浦东会展中心。

新商旅 新体验。



| 会议室 | 尺寸 (宽 x 长 x 高) | 面积 (平方米) | 剧院型 | 教室型 | 董事会型 | U-型 | 鸡尾酒会 | 宴会 |
|--------|-------------------|-------------|-----|-----|------|-----|------|-----|
| 宴会厅 | 14.7x22.8x4.5 | 335 | 350 | 220 | 70 | 120 | 300 | 220 |
| 一楼会议室 | 6x12.3x3.1 | 75 | 60 | 30 | 20 | 27 | 30 | 40 |
| 会议室1-2 | 6.8x12.4x3 | 85 | 70 | 36 | 20 | 27 | 40 | 40 |
| 会议室4 | 8.5x6x3.1 | 51 | 40 | 27 | 12 | 14 | 30 | 25 |
| 会议室5 | 8.5x6x3.1 | 51 | 40 | 27 | 12 | 14 | 30 | 25 |
| 会议室6 | 6.5x7.6x3.1 | 50 | 40 | 24 | 10 | 14 | 20 | 14 |
| 会议室7 | 6.9x11.4x3.1 | 78 | 70 | 36 | 12 | 21 | 30 | 30 |