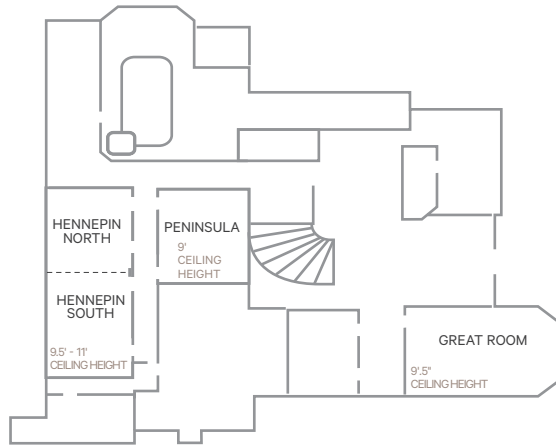
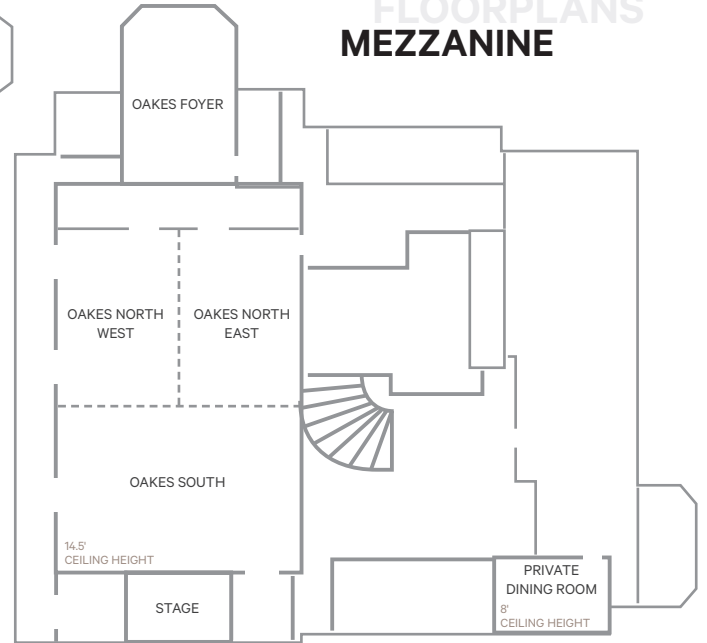


FLOORPLANS LOBBY LEVEL

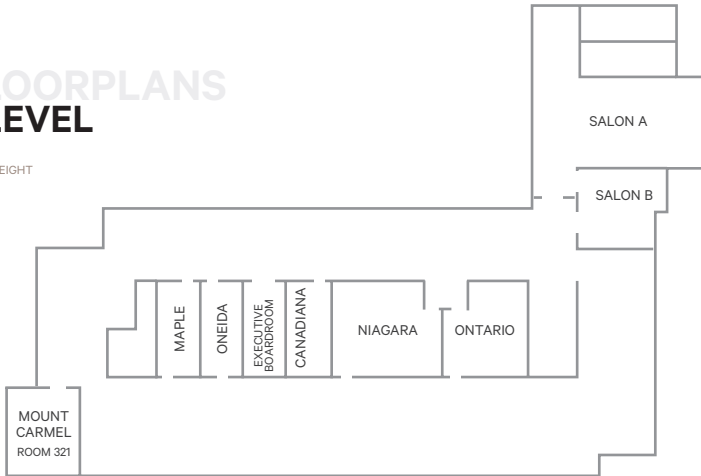


FLOORPLANS MEZZANINE



FLOORPLANS 3RD LEVEL

8' - CEILING HEIGHT



ROOM	DIMENSIONS (W X D X H)	THEATRE	CLASSROOM	HOLLOW SQ.	RECEPTION	BANQUET	BOOTH (8X8)	BOOTH (10X10)
Oakes Ballroom	110 x 77 x 14.5 = 8470 ft ²	1000	480	-	808	648	51	40
Oakes North	77 x 60 x 14.5 = 4620 ft ²	500	240	-	558	360	25	20
Oakes North West	36 x 60 x 14.5 = 2160 ft ²	180	120	54	175	156	13	8
Oakes North East	36 x 60 x 14.5 = 2160 ft ²	180	120	54	175	156	13	8
Oakes South	50 x 77 x 14.5 = 3850 ft ²	350	200	-	350	288	22	20
Stage	21 x 33 x 12 = 693 ft ²	-	-	-	-	-	-	-
Oakes Foyer	71 x 32 x 11 = 2272 ft ²	180	96	60	164	156	12	10
Hennepin Ballroom	85 x 33 x 9.5 = 2805 ft ²	250	144	96	280	216	17	13
Hennepin North	33 x 33 x 11 = 1089 ft ²	80	48	40	100	96	5	4
Hennepin South	52 x 33 x 9.5 = 1716 ft ²	120	96	56	180	132	8	8
Peninsula	33 x 42 x 9 = 1386 ft ²	130	72	48	150	84	7	5
Private Dining Room	28 x 14 x 8 = 392 ft ²	Boardroom Only (25 people)						
Salon A	34 x 55 x 8 = 1870 ft ²	150	96	60	140	144	13	10
Salon B	17 x 28 x 8 = 476 ft ²	40	30	28	40	36	4	3
Ontario	18 x 32 x 8 = 576 ft ²	30	24	28	50	36	4	3
Niagara	32 x 24 x 8 = 768 ft ²	60	45	36	60	48	4	4
Canadiana	32 x 10 x 8 = 320 ft ²	25	12	-	30	-	-	-
Executive Boardroom	32 x 14 x 8 = 448 ft ²	Boardroom Only (12 people)						
Oneida	32 x 10 x 8 = 320 ft ²	30	15	-	30	-	-	-
Maple	11 x 32 x 8 = 352 ft ²	30	15	-	30	-	-	-
Mount Carmel (Room 321)	27 x 15 x 8 = 405 ft ²	20	12	-	20	-	-	-
Great Room	86 x 36 x 9.5 = 3096 ft ²	-	-	-	194	-	-	-

NIAGARA MEETINGS.COM